

Thank you for purchasing AUTEL tool. Manufactured to a high standard, our tool will, if used according to these instructions and properly maintained, give you years of trouble-free performance.

## Getting Started



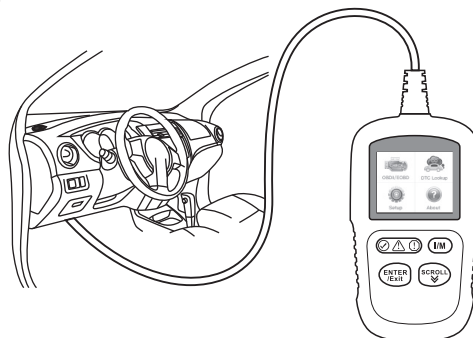
**IMPORTANT:** Before operating or maintaining this unit, please read these instructions carefully. Use this unit correctly and properly. Failure to do so may cause damage and/or personal injury and will void the product warranty.

1



- Scan QR Code to visit our website at [www.autel.com](http://www.autel.com).
- Create an Autel ID and register the product with device's SN and password.

2



- Connect the main cable's adapter to the vehicle's DLC which is generally located under the vehicle dash.
- The device will be automatically powered up and your AL329 is now ready to work.

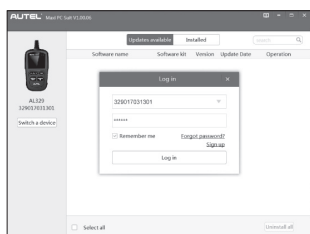


Please download the **Maxi PC Suite** from

[www.autel.com](http://www.autel.com) > Support & Updates > Firmware & Downloads > Update Client, and install to your Windows-based computer.

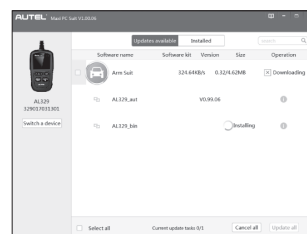
## Software Update and Delete

1



- Run the Maxi PC Suite. Wait for the Log In window to display.
- Connect the device with the computer using the included USB cable.
- Select **Update Mode** in the tool.
- Enter your Autel ID and password and wait for the **Update** window to display. If you forget your password, click the **[Forget Password?]** link to our website and retrieve your password. Or click **Sign up** to create an Autel ID to continue.
- Select tool and serial number, click **OK** to continue.

2



- In the **Update** window, select the appropriate files to install.
- Click on the **Installed** tag and the list of installed programs will display.
- Select the program(s) you would delete.